

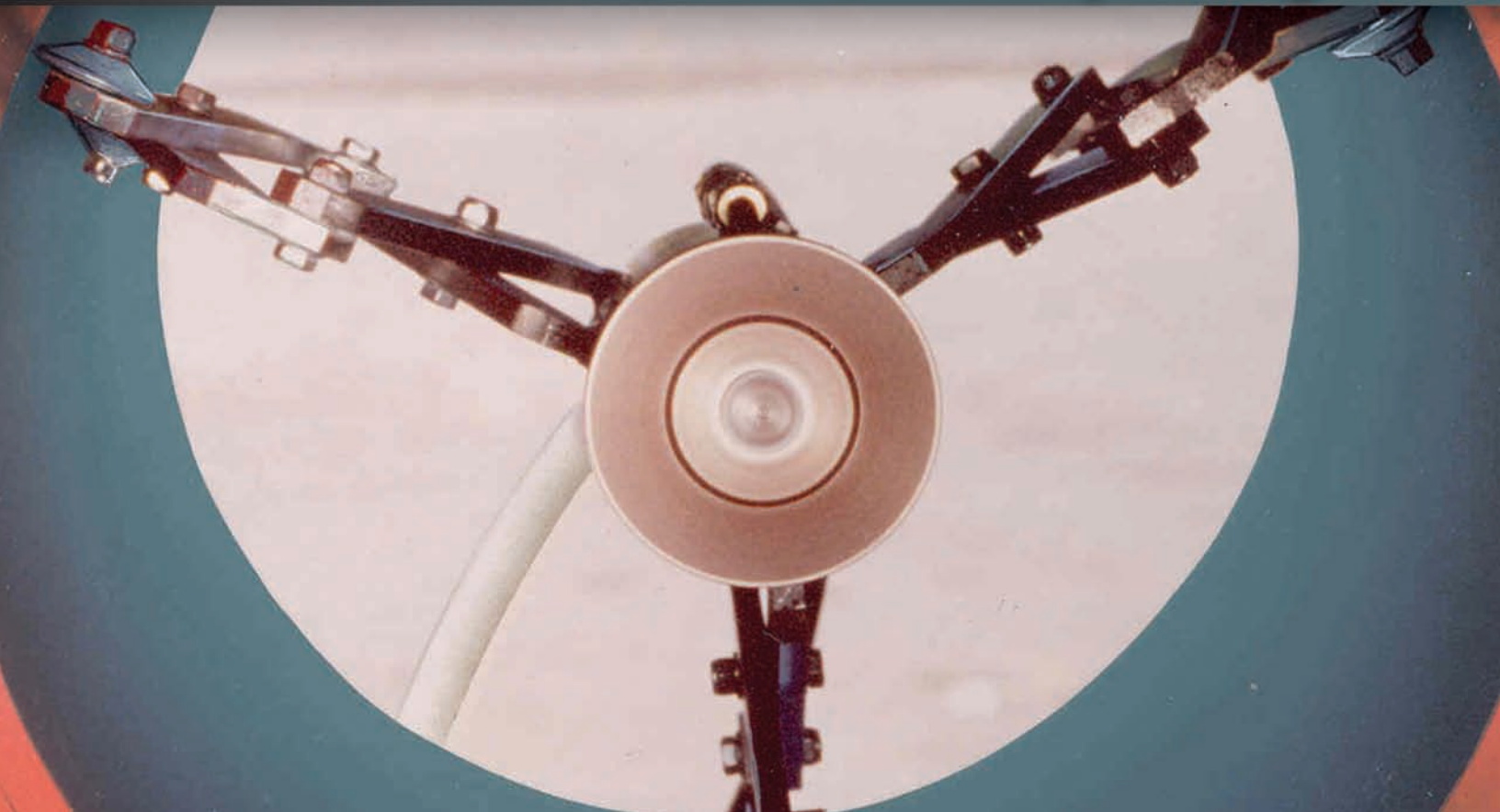
CLEMCO



Precise, Economical, Internal Pipe Cleaning

Pipe Tools

Fast, Efficient, Internal Pipe Coating



Internal Pipe Cleaning

- *Clemco tools make pipe cleaning easier*
- *Suitable for pipe ID sizes from 3/4-inch to 137 inches*
- *Easy to set up*
- *All use standard pressure blast machine*
- *No need to rotate pipe or tubing*
- *Fast, economical, efficient pipe cleaning*

Cleaning and Preventing Corrosion with Proper Surface Preparation

Clemco pipe cleaning tools help you get the job done faster, enhancing productivity and saving you money. Clemco tools are engineered for a wide range of pipe diameters and most common blast abrasives. Each tool handles a specified pipe diameter range with the use of centering devices.

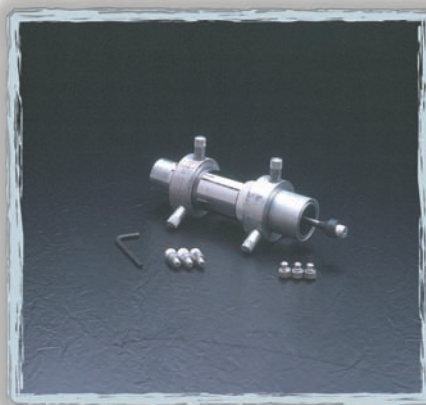
Easy Set Up and Use

These pneumatic tools use compressed air, common abrasives, and standard blast machines, coupled blast hose attached to a customer-provided pipe lance normally in a length that matches the pipe to be cleaned. The tool is placed at the far end of the pipe and drawn manually through the pipe at a speed determined to clean the pipe to the desired degree of cleanliness.

Clemco Hollo-Blast Jr. and Hollo-Blast



Hollo-Blast Jr. is sold with four sets of centering collars



Hollo-Blast with centering collar for 2" to 5" ID pipe



Hollo-Blast with centering carriage for 5" to 12" ID pipe

Hollo-Blast Jr. for Pipes 3/4-inch to 2-inch ID

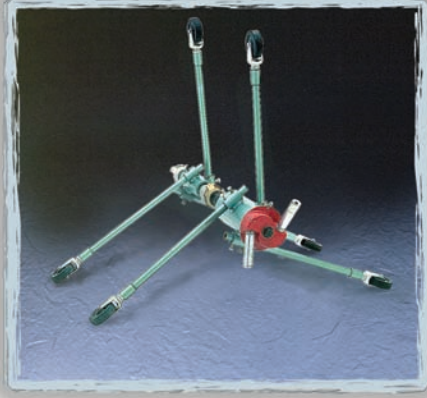
Hollo-Blast Jr. comes with a 9/32-inch tungsten carbide nozzle, which consumes 80 cfm at 100 psi. Four sets of centering collars accommodate pipes from 1-inch to 2-inch ID. Without using any collar, the tool fits pipe 3/4-inch ID.

Hollo-Blast for Pipes 2-inch to 12-inch ID

Hollo-Blast comes standard with a 1/2-inch short venturi nozzle and tungsten-carbide deflection tip to spray accelerated abrasive in a 360-degree pattern. With 1/2-inch nozzle, the tool uses 200 cfm at 100 psi. Options include a larger, 5/8-inch nozzle

(consuming 350 cfm at 100 psi) and deflection tips in longer-wearing materials: boron carbide or composite material for aggressive-media applications. Adjustable centering devices are used to fit the tool to the pipe diameter size.

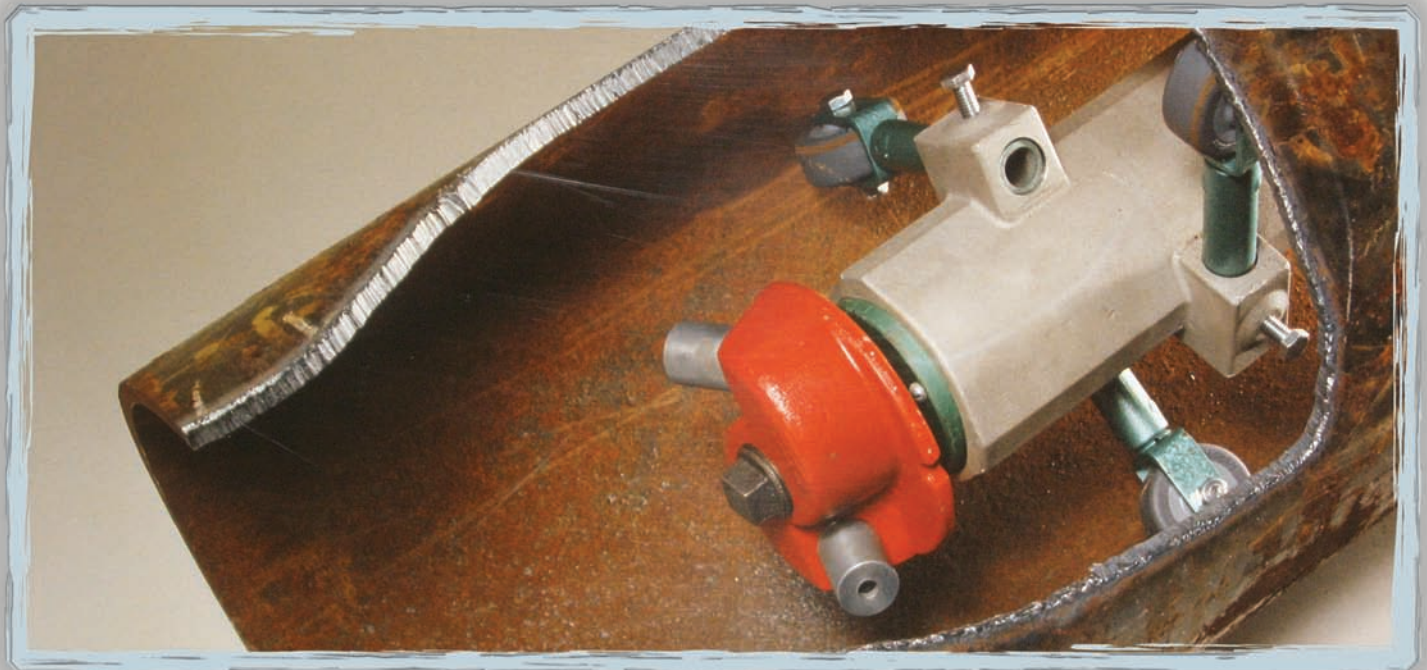
Clemco Spin-Blast — for pipes 8-inch to 60-inch ID



The Spin-Blast cleans pipe at rates unobtainable by any other means. The Spin-Blast comes in two model sizes: SB-836 for pipes 8-inch ID to 36-inch ID, with the standard nozzle head; and SB-3660 for pipes from 36-inch to 60-inch ID with a nozzle head capable of holding two nozzles.

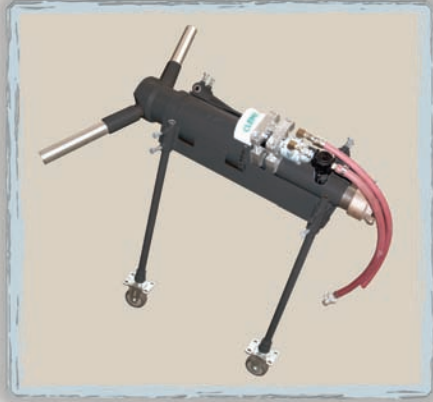
In operation, two standard nozzles installed on the head cause the head to rotate and propel abrasive to the pipe surface for incomparable hitting force. SB-3660 uses long venturi nozzles for effective blasting of larger ID pipe.

Adjustable carriages are used to fit the tools to the pipe diameter size. These Spin-Blast models are productivity tools, best used in a controlled environment, where they can be maintained as needed for the production schedule.



Internal Pipe Cleaning

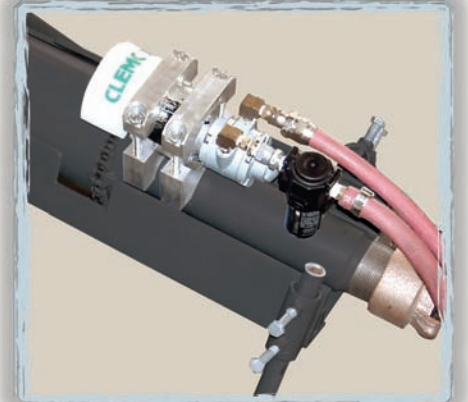
Spin-Blast HD — for large diameter pipe



Spin-Blast HD-P Rugged construction, easy control

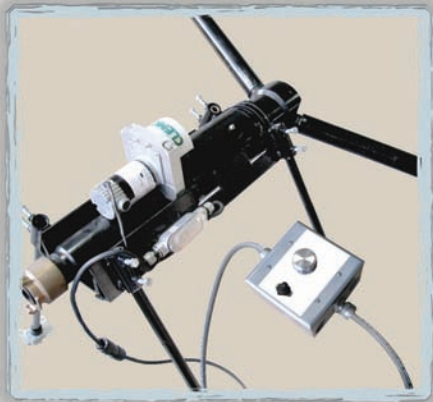
The Spin-Blast HD-P

For 18-inch to 48-inch pipe, the Spin-Blast HD pneumatic model uses an air motor to control the rotation speed of the blast head. Independent manual control of the blast head speed allows precise adjustments to suit the pipe surface condition and degree of cleanliness needed. The air motor can be run off the blast cleaning air supply or can be operated with its own compressor. The tool is designed to use two standard long venturi nozzles. The total compressed-air consumption of the tool will depend upon the nozzle orifice size.



Spin-Blast HD-P air motor

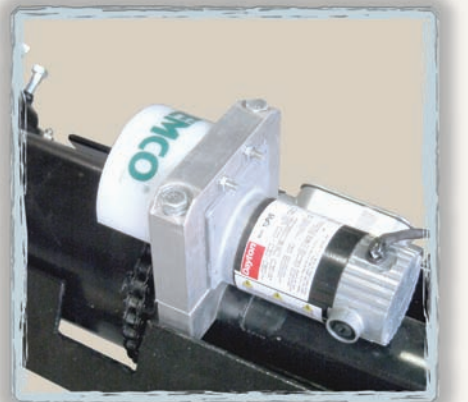
Two HD models serve the needs of rugged, high-production operations. Engineered to be truly heavy-duty for real world conditions, they have few moving parts, which translates to more optimum maintenance-friendliness.



Spin-Blast HD-E with control box

The Spin-Blast HD-E

The Spin-Blast HD electric model is for 18-inch to 137-inch pipe diameters. The motor is controlled by a simple-to-operate control box with an on-off switch and a knob to control the RPMs of the DC motor, which controls the blast head speed. By manually controlling the blast head speed, the operator can vary the dwell time for more efficient blast cleaning. The HD-E does not require AC electric power; and does not consume expensive compressed air beyond the needs of the nozzles. The motor is capable of producing 4.5 inch pounds at 25 RPM; and has 100:1 gear ratio providing the necessary torque for large, high-production blast nozzles for large diameter pipe.



Spin-Blast HD-E electric motor

Internal Pipe Cleaning Tools

SPECIFICATIONS:

Tool	Pipe ID	Nozzle Orifice	No. of Nozzles	Air Consumption @ 100 psi	Air Requirements @ 100 psi
Hollo-Blast Jr.	3/4" - 2"	9/32"	1	80	
Hollo-Blast	2" - 12"	1/2" (standard)	1	200	
		5/8" (optional)	1	350	
Note: Air volume required to operate Spin-Blast models is greater than air normally consumed by the two nozzles; the additional air volume is needed for blast head rotation. Maintaining recommended air volume ensures proper function and maximum productivity .					
Spin-Blast SB-836	8" - 12"	1/4" x 1-3/4"	2		300
	8" - 12"	5/16" x 1-3/4"			400
	8" - 12"	3/8" x 1-3/4"			600
	12" - 20"	5/16" x 3"	2		400
	20" - 36"	3/8" x 4"	2		600
Spin-Blast SB-3660	36" - 60"	1/4" long venturi	2		300
		5/16" long venturi	2		400
		3/8" long venturi	2		600
Note: Air volume for Spin-Blast HD models is volume consumed by nozzles; independent motors operate blast head. Range of cfm is for air volume consumed as nozzles wear. Replace nozzles when worn to next 1/16".					
Spin-Blast HD					
Pneumatic	18" - 48"	1/4" long venturi	2	Note: add 50 cfm for air motor operation 162 - 274 274 - 392 392 - 508 508 - 676 676 - 1096	
		5/16" long venturi	2		
		3/8" long venturi	2		
		7/16" long venturi	2		
		1/2" long venturi	2		
Electric	18" - 137"	1/4" long venturi	2		
		5/16" long venturi	2		
		3/8" long venturi	2		
		7/16" long venturi	2		
		1/2" long venturi	2		

ORDERING INFORMATION:

Hollo-Blast Jr.	Stock No.	Spin-Blast SB-3660 (for 36" to 60" pipe ID)
Hollo-Blast Jr., with centering collars and reducer01098	Spin-Blast tool less carriage & nozzles
Without reducer0109910547
Centering collar set01114	(Order nozzles and carriage separately)
Hollo-Blast with tungsten tip and sleeves		Spin-Blast carriage
Hollo-Blast, less carriage, with 1/2" nozzle0107610560
Hollo-Blast, less carriage, with 5/8" nozzle08446	Spare parts kit
Hollo-Blast with boron tip and sleeves	10894
Hollo-Blast, less carriage, with 1/2" nozzle21190	Nozzles (2 required)
Hollo-Blast, less carriage, with 5/8" nozzle25725	1/4" orifice x 6" long venturi
Hollo-Blast centering collar set (3" to 5")0112404703
Hollo-Blast centering carriage (5" to 12")01131	5/16" orifice x 6-7/16" long venturi
Spin-Blast SB-836 for (8" to 36" pipe ID)	04705
Spin-Blast tool less carriage,		Spin-Blast HD-P (air-motor driven)
with 1/4" x 1-3/4" nozzles (2)02601	Spin-Blast HD-P tool (less nozzles) with carriage
Spin-Blast carriage (8" to 17")0364125070
Spin-Blast carriage (12" to 36")04971	Spin-Blast HD-P tool (less nozzles) w/o carriage
Spare parts kit0260325129
Nozzles (2 required)		Nozzle, long venturi, 3/8" orifice
1/4" x 1-3/4" long0140823516
5/16" x 1-3/4" long01409	Nozzle, long venturi, 7/16" orifice
3/8" x 1-3/4" long0141123517
5/16" x 3" long01410	Nozzle, long venturi, 1/2" orifice
3/8" x 4" long0141223518
		Carriage assembly
	25117
		Spare parts kit
	24649
		Spin-Blast HD-E (electric-motor driven)
		Spin-Blast HD-E tool (less nozzles) with carriage
	24640
		Spin-Blast HD-E tool (less nozzles) w/o carriage
	24641
		Nozzles (same as Spin-Blast HD-P)
		Nozzle extensions (set of two)
		6".....25118
		12".....24647
		24".....24648
		Spare parts kit
	24649